

CASE HISTORY

Rev:01, Date : 14.05.2020

CONSTRUCTION OF GABION RETAINING WALL FOR RAJKAMAL SITE AT JUHU BEACH, MUMBAI

MUMBAI, MAHARASHTRA, INDIA



Retaining Structures

Client:	Products used:
M/S. DYNAMIC GROUP	TECHFAB METAL GABIONS ZINC+PVC COATED TECHGEO NONWOVEN GEOTEXTILE PR20 (200GSM)
Main contractor:	Quantity supplied:
Manufacturer & Supplier:	Year of construction:
TECHFAB (INDIA) INDUSTRIES LTD.	

Solution:

Gabion Retaining walls are flexible structures which are very suitable in case of retaining structures for protection, nearby the water body. Gabions can take differential settlement effectively.

Gabions are very effective for the protection work near by the water body, such as river bank or sea shore. Nonwoven Geotextile are used beneath and behind the Gabion wall for filtration purpose. Client is intended to reclaim the land such that the same can be utilized for gardening in the location of Juhu beach, Mumbai. Gabion retaining wall was the ideal choice for earth retention at sea shore for gardening & other recreational purpose. After completion of Gabion wall installation, area is very pleasant in look with architectural aspects.



Photo 1 : TechFab Metal Gabion - Longitudinal view

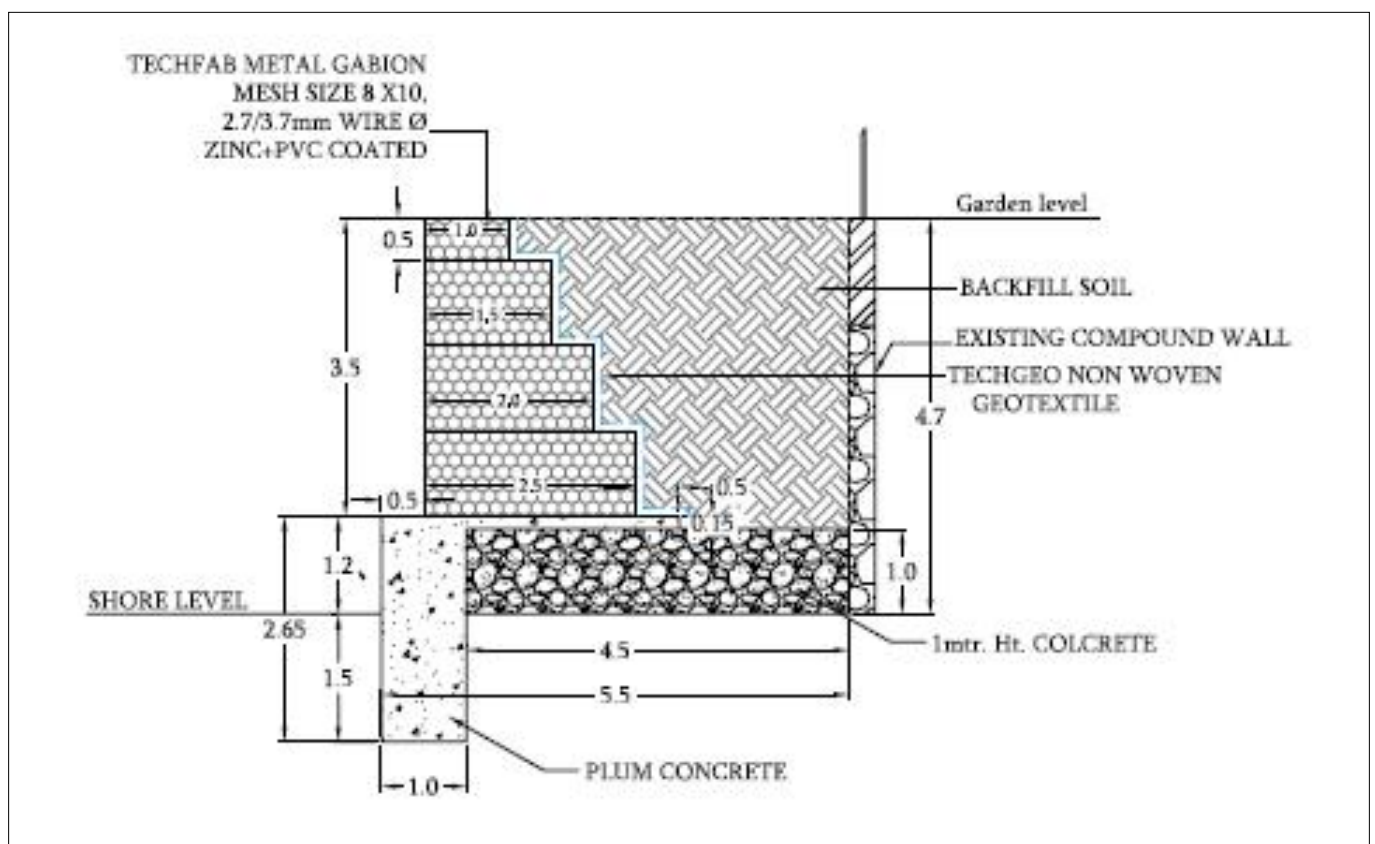
Benefits of TechGeo Nonwoven Geotextile:

- Acts as a “Filter” by preventing the backfill material from being washed out through Gabion face.
- Acts as a “Separator” between the backfill material and the Gabion facia and thereby prevents the mixing of the tow.

Benefits of TechFab Metal Gabion over Conventional RCC Retaining Wall on site:

TechFab Metal Gabion was suggested for retaining and erosion control purposes in lieu of the conventional R.C.C Retaining Wall for achieving the following advantages:

- Flexible structure which can accommodate differential settlement.
- Free draining structure with no pore pressure development behind wall.
- Easy in construction, as it does not require skilled labourers.
- Does not require curing time as in case of R.C.C Retaining wall.
- Eco-friendly, as the vegetation growth over it, is compatible with surrounding environment.
- Does not corrode under areas which are in constant / partial submergence.
- Cost incurred is very less compared to R.C.C Retaining Wall and depends only on the local availability of boulders.



Typical Cross section of 3.5m High Gabion Retaining Wall with TechFab Metal Gabion



Photo 2 : TechFab Metal Gabion Installation



Photo 3 : TechFab Metal Gabion - Back view

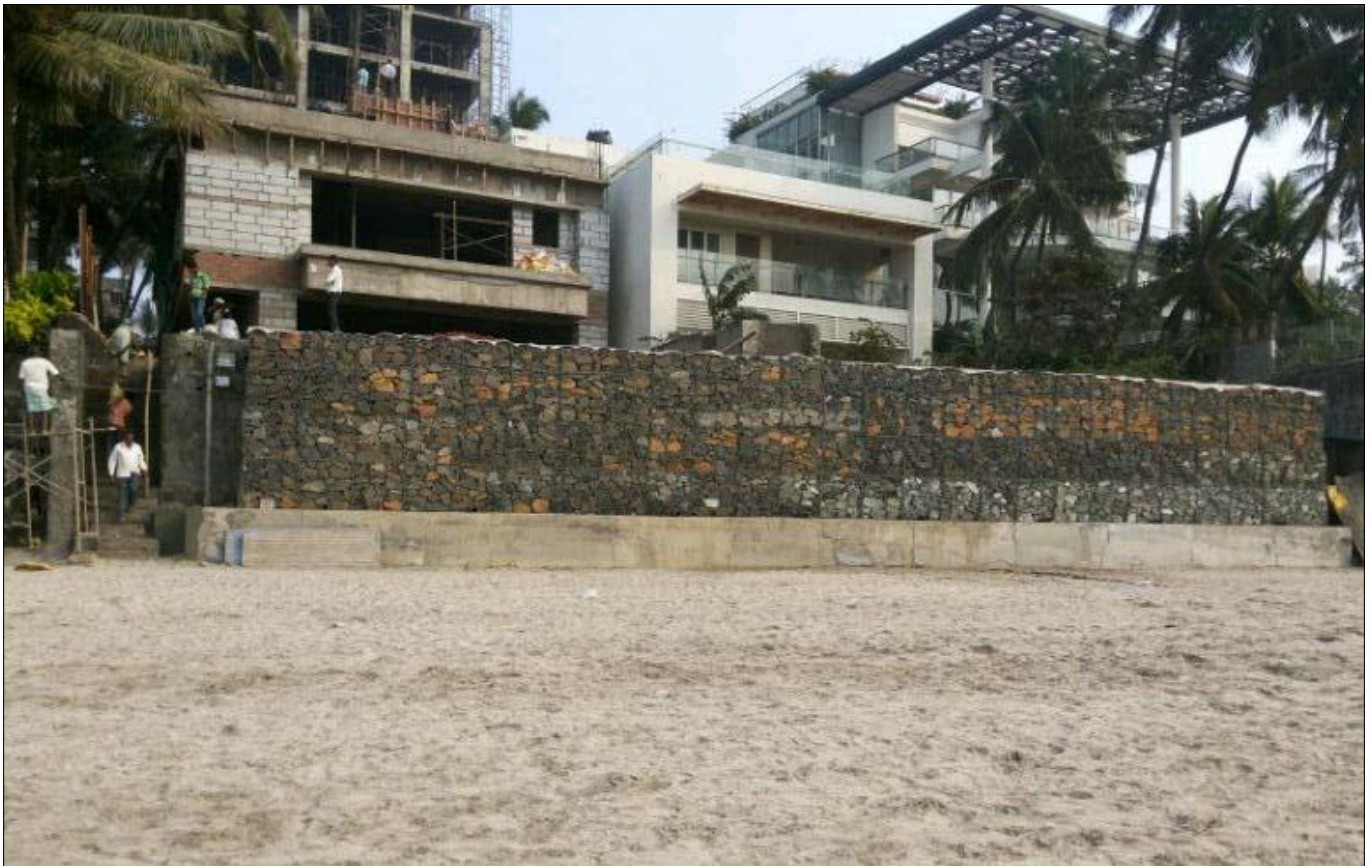


Photo 4 : Completed Structure

Conclusion:

The project was successfully completed.

For further details kindly contact :

TechFab India Industries Ltd.

711/712, Embassy Centre, Nariman Point, Mumbai – 400021

Tel: + 91– 22 - 2287 6224 / 6225 Fax: + 91– 22 - 2287 6218

E: info@techfabindia.com

W: www.techfabindia.com